

I am **मुंबई**



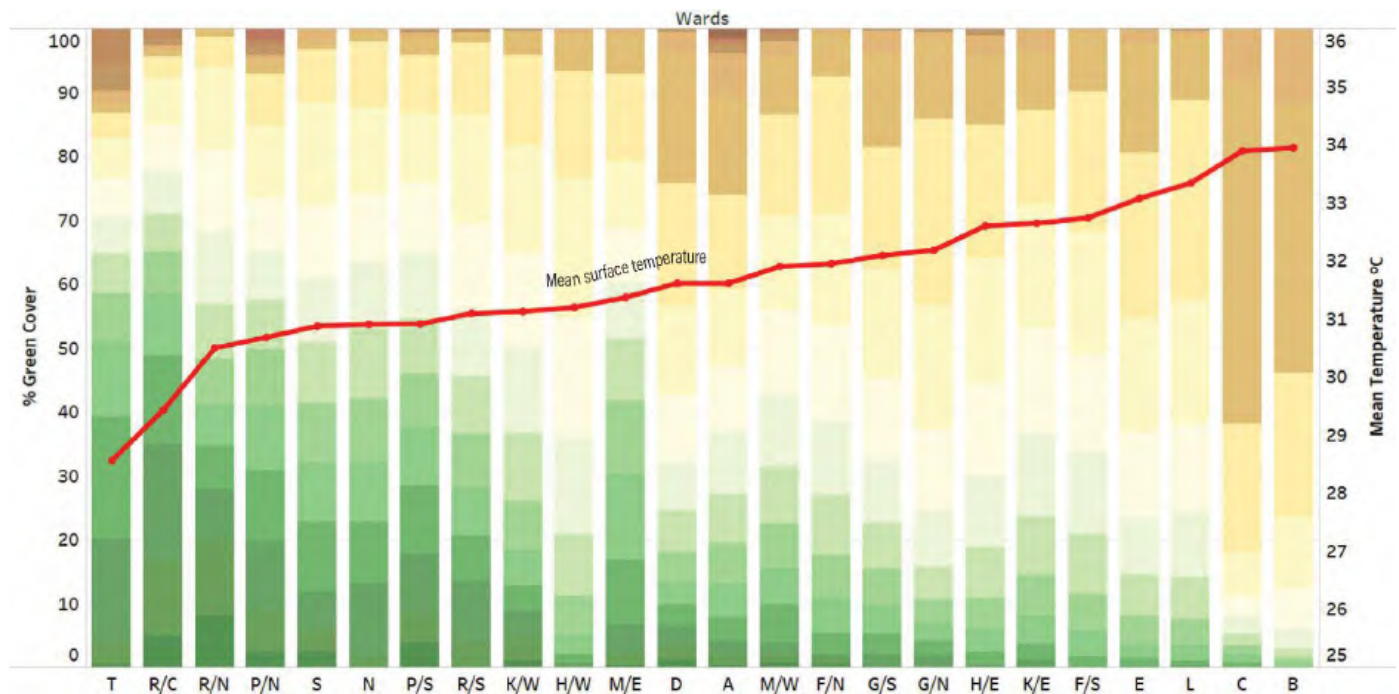
A city of 12.44 million, growing and evolving at a breathtaking pace. Glass towers rise, streets expand, and new infrastructure promises progress. Yet, this transformation poses a challenge: as concrete spreads and green spaces shrink, I am warming alarmingly, turning into a heat trap that strains daily life—especially for those most vulnerable.

But this moment of rapid change is also our greatest opportunity. As we shape the Mumbai of tomorrow, we can choose to build with nature, not against it—creating shaded streets, biodiverse parks, green roofs, and

ecological corridors that cool neighborhoods and restore balance. These solutions do more than fight heat; they create healthier public spaces, improve air quality, and ensure that every community—rich or poor—shares in the benefits of a greener city.

This is our chance to shape a city where growth and greenery go hand in hand. I call upon decision-makers, citizens, students, and changemakers to join in this collective effort. Together, let us plant hope, nurture life, and sow the Seeds of Change—to make Mumbai cooler, greener, and more humane, a city where nature and people thrive as one.

The Heat-Green Divide: Ward-wise Surface Temperature and Vegetation Cover



Source: WRI India; Contains Modified Copernicus Sentinel Data [2015-2020] & LandSat 8 (USGS)

I am मुंबई

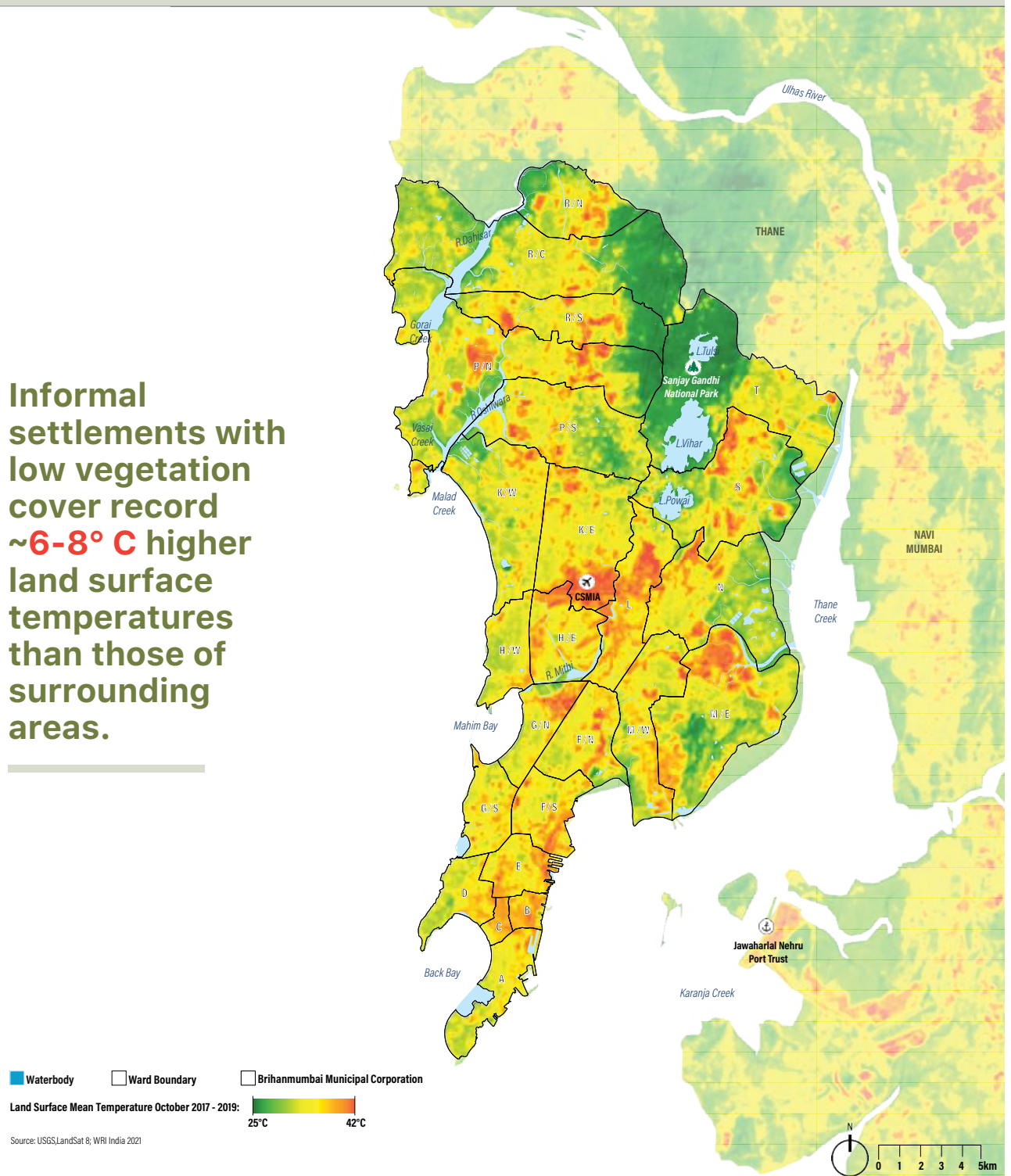
I need a 'Greening Plan'

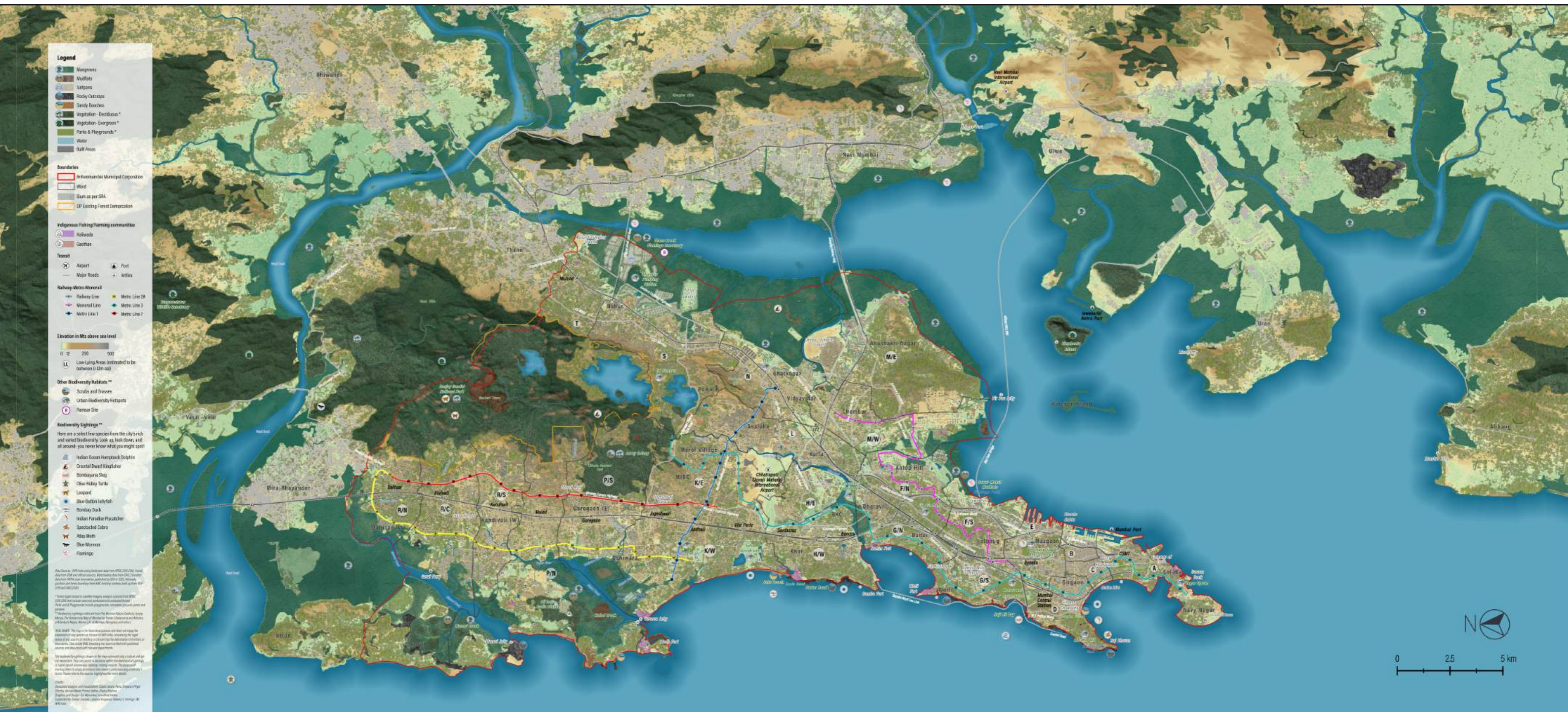
The Mumbai Climate Action Plan (MCAP) sets an ambitious goal: increase green cover to **40% by 2030**, expanding from 137 sq. km to 180 sq. km and beyond. In a rapidly warming city, trees and natural buffers are no longer aspirational luxuries—they are **critical infrastructure** against heat stress, flooding, and air pollution. To achieve this equitably and sustainably, Mumbai must **institutionalise a Greening Plan** - a blueprint that aims to plant the right '**Seeds of Change**' and inspires cities across Maharashtra and India.

Mumbai stands at a crossroads: mega infrastructure projects are reshaping localities, lives, and our relationships with nature. In this context, a Greening Plan offers a chance to scale citywide greening and **reconnect people with nature**.

This exhibition is a **call for collective action**—bringing citizens, experts, financiers, and government, together to celebrate diverse species, innovations, and community-led solutions that can **re-green Mumbai and cool its future**.

Informal settlements with low vegetation cover record **~6-8° C** higher land surface temperatures than those of surrounding areas.





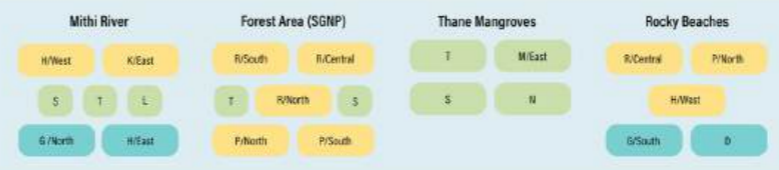
I am Mumbai — Rooted in a Tapestry of Diverse Ecologies



SHARED ECOSYSTEMS

Different ecosystems and their ward clusters

- City Wards
- Western Suburb Wards
- Eastern Suburb Wards



The map highlights Mumbai's interconnected natural ecosystems—forests, mangroves, river catchments, waterbodies, wetlands, hilly slopes, grasslands, biodiversity hotspots, rocky and sandy beaches, and salt pans. When clearly recognized in Mumbai's Greening Plan, these provide useful context for ecologically sensitive greening and nature-based interventions.

Planting with a Plan

Mumbai must move from fragmented tree-planting to **scientific, citywide greening**.

A clear process can guide projects—small to large—towards outcomes that boost biodiversity, cooling, and climate resilience. A culture of **“planting with a plan”** ensures greening is ecological, contextual, and cared for the long-term—not a one-off. Aligned with climate goals, citizens, housing societies, NGOs, corporates, and institutions can adopt five steps for greening at scale. Making this a Standard Operating Procedure (SOP) will help Mumbai expand efforts systematically and amplify impact.



1. Identify the Greening Potential

Start by mapping sites that have the potential to reduce heat and can link blue-green networks. Citizen-led **mapathons** can uncover underused spaces.

A pilot in H/E Ward with Mumbai University and TISS showed the value: 43 students mapped 250+ sites, identifying spots for **greening and nature-based solutions over 142 acres.**

Legend

- Ward H/E Boundary
- Open spaces identified during Mapathon
 - Small
 - Medium
 - Large
 - Extra Large Plots



SMALL

MEDIUM

LARGE



2. Assess your Current Conditions

Every site is unique. Assess conditions to choose the right greening approach. These can include parameters such as:

- **Topography** for contours and drainage
- **Soil and hydrogeology** for water reuse and recharge
- **Sub-surface checks** for sensitive design

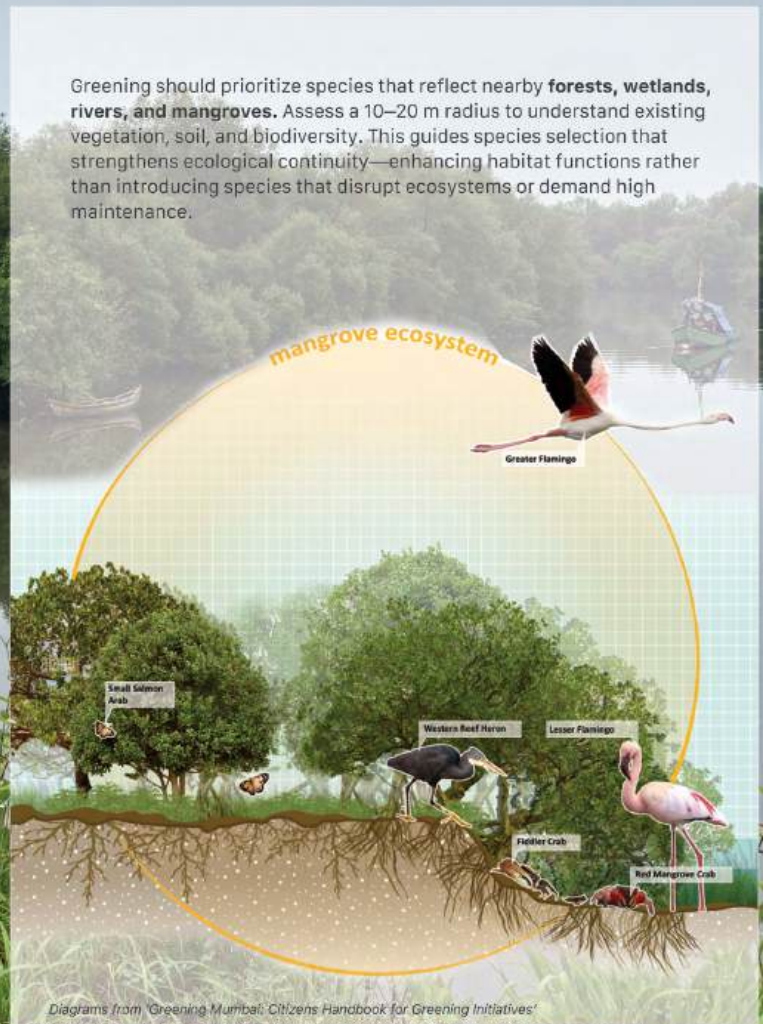
Baseline data—like land surface temperature—helps track impact over time.



Examples of environmental baselines to assess starting conditions

3. Connect with Urban Ecosystems

Greening should prioritize species that reflect nearby **forests, wetlands, rivers, and mangroves**. Assess a 10–20 m radius to understand existing vegetation, soil, and biodiversity. This guides species selection that strengthens ecological continuity—enhancing habitat functions rather than introducing species that disrupt ecosystems or demand high maintenance.



Diagrams from 'Greening Mumbai: Citizens Handbook for Greening Initiatives'

4. Partner with Local Communities

Community engagement is key to successful greening. **Trainings, workshops, and exposure visits** build environmental interest, shared ownership, and a collective vision that balances social and ecological needs. These photos show how workshops in Lalubhai Compound transformed neglected spaces in a Rehabilitation and Resettlement Colony into vibrant areas for youth and seniors. Supporting local champions with resources and permissions and encouraging nature enthusiasts can promote greening within settlements. Forums like **Sthanik Haritikaran Mandal** can mobilize resources and scale community-led practices.

FUNCTIONING OF STHANIK HARITIKARAN MANDAL FOR SMALL SCALE GREENING



STEP 1

Formation of the local area greening clubs or 'Sthanik Haritikaran Mandal' through self-registration.



STEP 2

Drafting of operating guidelines of the Mandal with a plan for distribution of roles and responsibilities.



STEP 3

Mobilization of resources. Sharing information of Mandal's activities with the community, BMC, and other mandals.



STEP 4

Carrying out regular activities and involving other residents of the community in Mandal's activities.



STEP 5

Establishment of a routine for planting, watering, pruning, and cleaning.

Image from 'Greening Mumbai: A Citizens' Handbook for Greening Initiatives by BMC

5. Plan for Long-Term Care



A range of solutions, as illustrated here, can emerge through findings from environmental baselines and community engagement processes. After implementation of solutions, site care is vital for sustained benefits. This includes sustainable watering, waste management, mulching and composting, and proper pruning. **Local monitoring committees** with diverse stakeholders and greening champions can define roles for community-led maintenance. For instance, an eco-club at Shahaji Nagar Municipal School in Cheeta Camp engages students through biodiversity workshops and ensures regular site upkeep.

Image from 'Greening Mumbai: A Citizens' Handbook for Greening Initiatives by BMC

